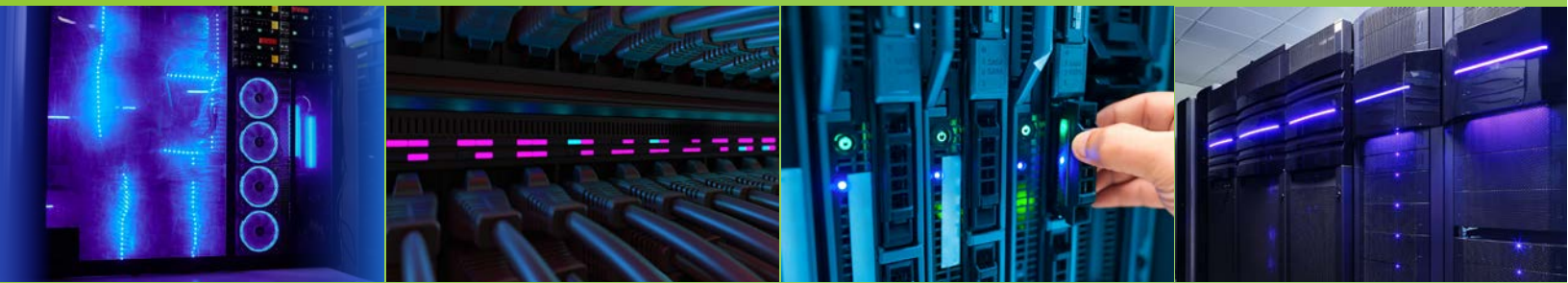


Circuit Board Indicator

Kingbright circuit board indicators comes in a variety of configurations and color combinations that meet the specifications of your design requirements. It's perfect for applications ranging from diagnostic, industrial equipment, and data storage applications.



35 /
Single Level CBI

36 /
Bi-Level CBI

37 /
Tri-Level CBI

37 /
Quad-Level CBI

SINGLE-LEVEL CBI

Part Number	Material	λ_D (nm)	Lens Type	Iv (mcd) @ 10mA*20mA		Viewing Angle	Dimensions
				Min.	Typ.		
WP934CB/ID	GaAsP/GaP	617	Red Diffused	12	30	50°	<p>T-1 (3mm) Right Angle</p> <p>WP934CB/ID</p>
WP934CB/YD	GaAsP/GaP	588	Yellow Diffused	8	15	50°	
WP934CB/GD	GaP	568	Green Diffused	10	25	50°	
WP934EW/ID	GaAsP/GaP	617	Red Diffused	12	30	50°	<p>T-1 (3mm) Right Angle</p> <p>WP934EW/ID</p>
WP934EW/YD	GaAsP/GaP	588	Yellow Diffused	8	15	50°	
WP934EW/GD	GaP	568	Green Diffused	10	25	50°	
WP130WDT/EGW	GaAsP/GaP	617	White Diffused	*10	*24	60°	<p>T-1 (3mm) Right Angle</p> <p>WP130WDT/ID</p>
	GaP	568		*12	*30		
WP130WDT/GYW	GaP	568	White Diffused	*18	*40	60°	
	GaAsP/GaP	588		*10	*20		
WP1384AD/ID	GaAsP/GaP	617	Red Diffused	12	30	60°	<p>3.4mm Right Angle</p> <p>WP1384AD/ID</p>
WP1384AD/YD	GaAsP/GaP	588	Yellow Diffused	8	15	60°	
WP1384AD/GD	GaP	568	Green Diffused	10	20	60°	
WP1533BQ/ID	GaAsP/GaP	617	Red Diffused	15	45	30°	<p>4.7mm Right Angle</p> <p>WP1533BQ/ID</p>
WP1533BQ/GD	GaP	568	Green Diffused	20	50	30°	

All dimensions are in millimeters (inches). Tolerance is $\pm 0.25\text{mm}$ (0.01") unless otherwise noted.

SINGLE-LEVEL CBI

Part Number	Material	λ_D (nm)	Lens Type	Iv (mcd) @10mA*20mA		Viewing Angle 2 θ 1/2	Dimensions
				Min.	Typ.		
WP1503CB/ID	GaAsP/GaP	617	Red Diffused	30	70	30°	T-1 3/4 (5mm) Right Angle Dimensions: 6(0.236), 4(0.157)±0.3, 6(0.236), 3(0.118), 3.5(0.138) Min., 2.54(0.1), 5.75(0.226)±0.5, 9.2(0.362), 0.5(0.02) ^{+0.25} _{-0.1}
WP1503CB/YD	GaAsP/GaP	588	Yellow Diffused	15	30	30°	
WP1503CB/GD	GaP	568	Green Diffused	15	30	30°	
WP59BL/EGW	GaAsP/GaP	617	White Diffused	*20	*40	30°	T-1 3/4 (5mm) Right Angle Dimensions: 7.24(0.285) Max., 5.5(0.217), 8.64(0.34), 7.24(0.285) Max., 3.62(0.143), 0.5(0.02) ^{+0.25} _{-0.1} , 3.5(0.138) Min., 2.54(0.1), 5.08(0.2) ±0.5, 2.54(0.1)
	GaP	568		*20	*60		
WP59BL/GYW	GaP	568	White Diffused	*50	*100	30°	
	GaAsP/GaP	588		*20	*40		
WP154A4AVSSUREQBFZGW	AlGaInP	630	White Diffused	*120	*250	60°	T-1 3/4 (5mm) Right Angle Dimensions: 7.5(0.295), 4.5(0.177), 5(0.197)±0.3, 11(0.433), 8(0.315), 4(0.157), 0.5(0.02), 3.2(0.126), 4.3, 2.1, 0.5(0.02), 7.65(0.301)±0.5, 1.5(0.059)
	InGaN	465		*300	*500		
	InGaN	525		*600	*1300		
WP154A4AVS/RGB-CA	AlGaInP	625	White Diffused	*900	*1500	60°	WP154A4AVSUREQBFZGW WP154A4AVS/RGB-CA Dimensions: 1.5x3=4.5(0.177)
	InGaN	470		*200	*400		
	InGaN	525		*480	*1100		

BI-LEVEL CBI

Part Number	Material	λ_D (nm)	Lens Type	Iv (mcd) @10mA		Viewing Angle 2 θ 1/2	Dimensions
				Min.	Typ.		
WP934EB/2ID	GaAsP/GaP	617	Red Diffused	12	30	50°	T-1 (3mm) Bi-Level Dimensions: 4.32(0.17)±0.2, 3.2(0.126) ±0.3, 9.02(0.355), 2.9(0.114), 2.8(0.11), 9.65(0.38), 5.08(0.2), 2.535(0.1), 0.5(0.02), 3.5(0.138) Min., 0.7Max., 2.54(0.1), 5.08(0.2), 2.54(0.1)
WP934EB/2YD	GaAsP/GaP	588	Yellow Diffused	8	15	50°	
WP934EB/2GD	GaP	568	Green Diffused	10	25	50°	

BI-LEVEL CBI

Part Number	Material	λ_D (nm)	Lens Type	Iv (mcd) @10mA*20mA		Viewing Angle 2θ1/2	Dimensions
				Min.	Typ.		
WP934MD/2ID	GaAsP/GaP	617	Red Diffused	12	30	50°	T-1 (3mm) Bi-Level Dimensions: 4.3(0.169)±0.2, 5.08(0.2), 9.65(0.38), 2.54(0.1), 3.68(0.145), 2.54(0.1), 0.7Max., 2.54(0.1), 2.8(0.11)±0.3, 8.13(0.32), φ2.9(0.114), 4.44(0.175)±0.5, 2.54(0.1), 0.5(0.02) ^{+0.25} _{-0.1} , Top LED
WP934MD/2YD	GaAsP/GaP	588	Yellow Diffused	8	15	50°	
WP934MD/2GD	GaP	568	Green Diffused	10	25	50°	
WP130WCP/2EGW	GaAsP/GaP	617	White Diffused	*10	*24	60°	T-1(3mm) Bi-Level Dimensions: 7(0.276), 2.15(0.085), 9.65(0.380), 5.08(0.2), 0.3(0.012)±, 3.5(0.138) Min., 2.54(0.1), 0.5(0.02), 0.7Max., 2.54(0.1), 2.7(0.106), 9.02(0.355), φ2.9(0.114), 0.5(0.02) ^{+0.25} _{-0.1} , Top LED
	GaP	568		*12	*30		
WP130WCP/2GYW	GaP	568	White Diffused	*18	*40	60°	
	GaAsP/GaP	588		*10	*20		

TRI-LEVEL CBI

Part Number	Material	λ_D (nm)	Lens Type	Iv (mcd) @10mA		Viewing Angle 2θ1/2	Dimensions
				Min.	Typ.		
WP934SA/3ID	GaAsP/GaP	617	Red Diffused	12	30	50°	T-1 (3mm) Tri-Level Dimensions: 4.32(0.17), 5.08(0.2), 15.24(0.6), 5.08(0.2), 3.5(0.138) Min., 0.7Max., 2.54(0.1), 2.54(0.1), 2.62(0.103), 11.43(0.45), φ2.9(0.114), 3.42(0.135), 7.14(0.281), 4.84(0.191), 1(0.039), 4.45(0.175), 2(0.079), 0.5(0.02) ^{+0.25} _{-0.1} , Top LED
WP934SA/3YD	GaAsP/GaP	588	Yellow Diffused	8	15	50°	
WP934SA/3GD	GaP	568	Green Diffused	10	25	50°	

QUAD-LEVEL CBI

Part Number	Material	λ_D (nm)	Lens Type	Iv (mcd) @10mA		Viewing Angle 2θ1/2	Dimensions
				Min.	Typ.		
WP934SB/4ID	GaAsP/GaP	617	Red Diffused	12	30	50°	T-1 (3mm) Quad-Level Dimensions: 4.45(0.175), 5.08(0.2), 20.3(0.799), 5.08(0.2), 5.08(0.2), 2.54(0.1), 0.5(0.02) ^{+0.25} _{-0.1} , 0.5(0.02), 0.7Max., 2.54(0.1), 3.6(0.142), 10.7(0.421) ±0.3, φ2.9(0.114), 1.94(0.076), 7.4(0.291), 3.7(0.146), 1(0.039), 2(0.079), 3.68(0.145) ±0.5, Top LED, 2.79(0.11) 1.9(0.075)-3PL
WP934SB/4YD	GaAsP/GaP	588	Yellow Diffused	8	15	50°	
WP934SB/4GD	GaP	568	Green Diffused	10	25	50°	

All dimensions are in millimeters (inches). Tolerance is ± 0.25mm (0.01") unless otherwise noted.